

# **YWCA Elgin Floorplan Drawings**

**YWCA 220 E. Chicago St. Elgin, IL 60120**

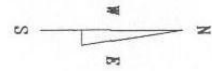
**Scale 1/16" = 1' 0"**

**All Measurements Approximate**

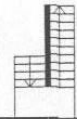
**April 1997; Rev. 807 djs**

East Chicago St.

YWCA 220 E. Chicago St. Elgin, IL 60123  
Sub-basement  
Scale 1/16" = 1' 0"  
All Measurements Approximate  
April 1997; Rev. 807 djs

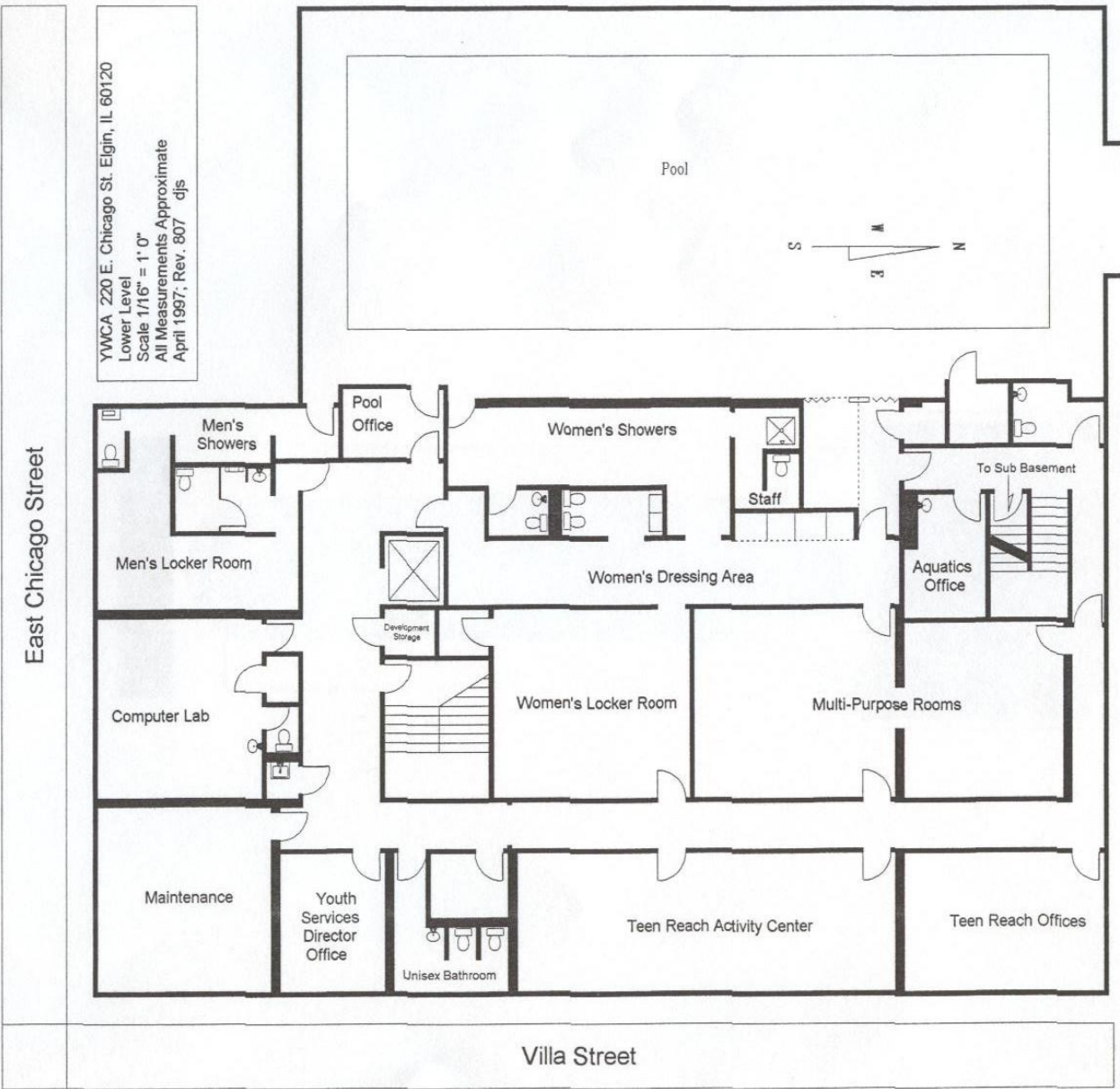


Sub-Basement

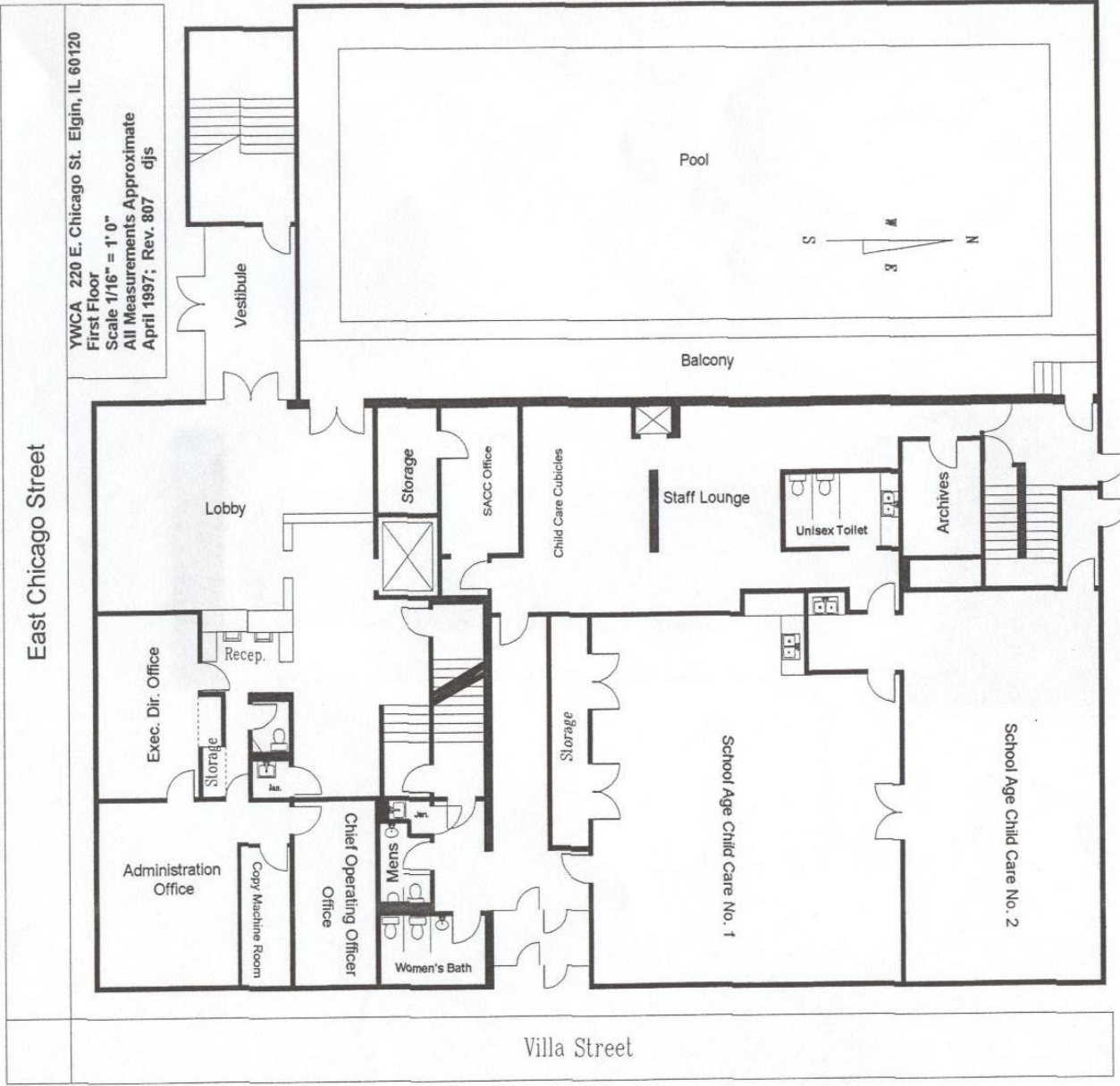


**Sub-Basement**

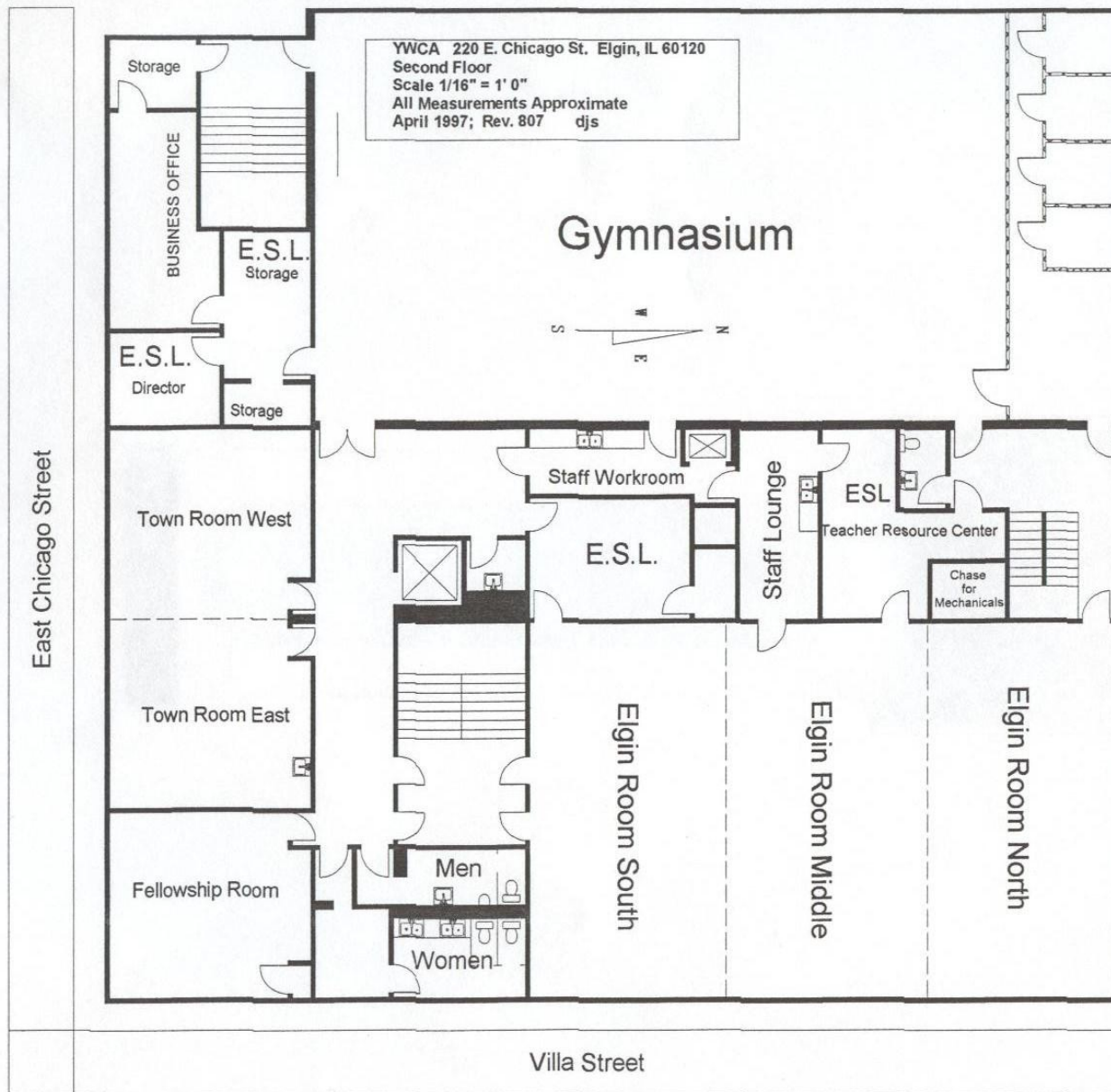
Villa Street



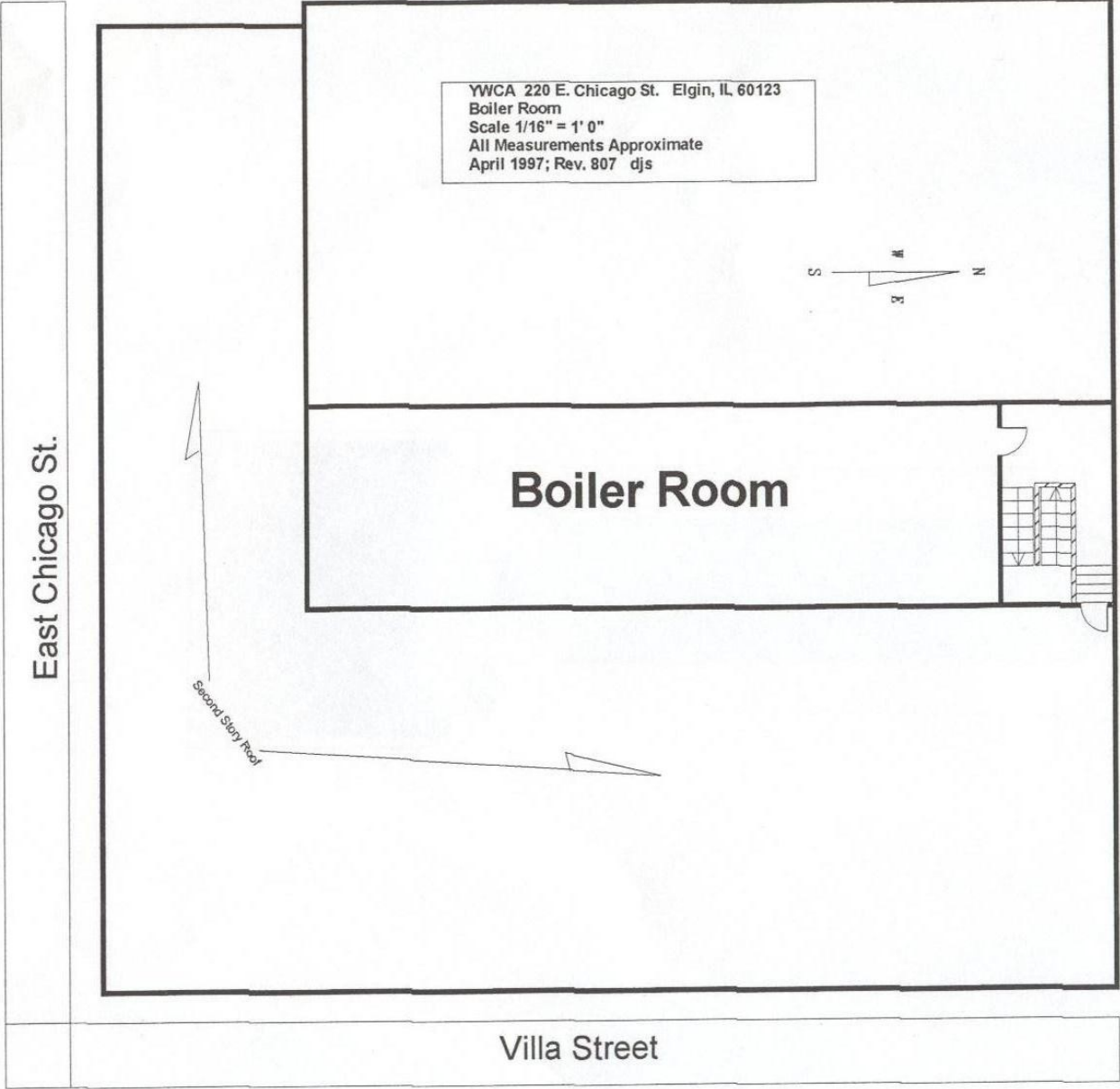
# Lower Level



# First Floor



# Second Floor



# Boiler Room